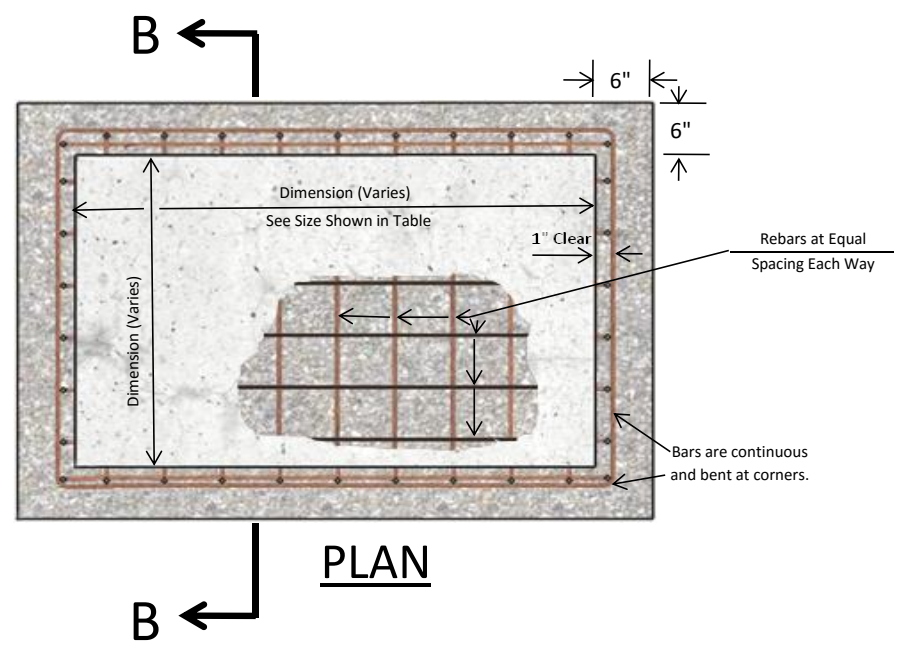
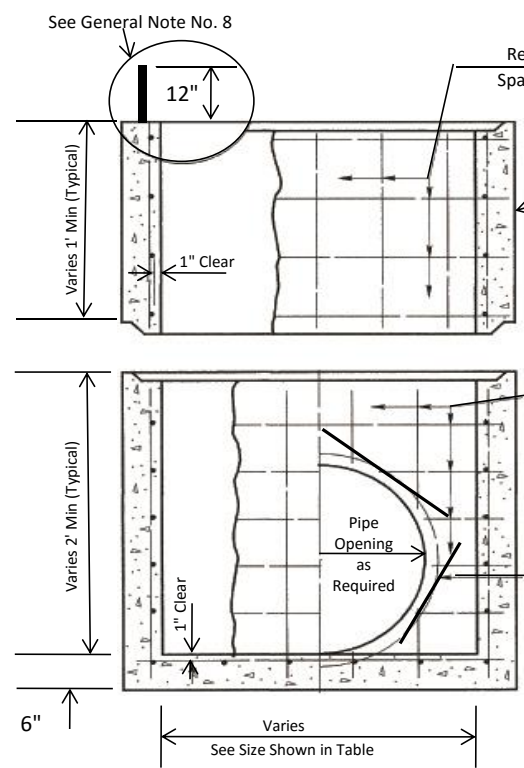


JOINT DETAIL



PLAN



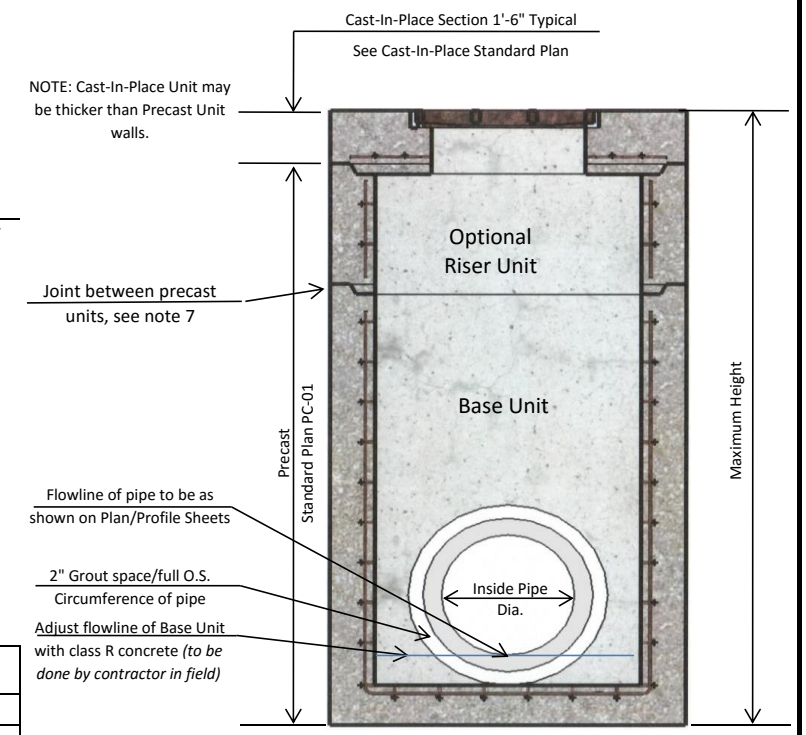
Optional Riser Unit

Base Unit

Section B - B

Precast Units for Catch Basins & Storm Drainage Manholes														
		4' Max. Dimension			6' Max. Dimension			8' Max. Dimension			10' Max. Dimension			
		Coastal Precast		2x2	Coastal Precast		4x6		Coastal Precast		4x8		Coastal Precast	
		Standard		2x3	Standard		4x6	Standard		Standard		4x10		
		Sizes		2x4	Sizes		5x5	Sizes		Standard		5x10		
				3x3			6x6							
				4x4										
Max. Ht.	Bar	Spac.*	As	Bar	Spac.*	As	Bar	Spac.*	As	Bar	Spac.*	As		
Feet	Size	Inches	in ² /ft	Size	Inches	in ² /ft	Size	Inches	in ² /ft	Size	Inches	in ² /ft		
8	4	12	0.20	4	6	0.40	4	5.5	0.44	5	5.5	0.68		
14	4	6	0.40	4	6	0.40	5	5.0	0.74	5	4.0	0.93		
20	4	6	0.40	4	4.5	0.53								

* Bar spacing applies to both directions and at all locations



Typical Composite Structure

General Notes:

- 1) Designed according to 4th edition 2007 AASHTO LRFD procedures. LA DOTD Standard Specifications shall apply.
- 2) Concrete shall attain a minimum compressive strength of 4,500 PSI at 28 days
- 3) Steel Reinforcement per ASTM A-615 Grade 60 U.S. Steel
- 4) Pipe opening to be formed when required
- 5) Pipe opening to be outside diameter of pipe plus 4" ± ½"
- 6) Pipe to be grouted by contractor in field after installation
- 7) Joints between Precast Units to be sealed (*by contractor in field*) with flexible plastic gasket material and wrapped with a 12" width of geotextile fabric (See DOTD OPL)
- 8) Joint between Cast-In-Place section and Precast Unit to be tongue and groove and sealed (*by contractor in field*) with Type II grade A epoxy (See DOTD OPL) or flat joint with a minimum of 12" of No. 4 bars at 18" centers (max) extended above the joint



Issue Date: Aug 2016 - Coastal Precast, Inc, 1011 St Mary Rd
Eunice, LA 70535 (337) 466-3572